

8/20

8

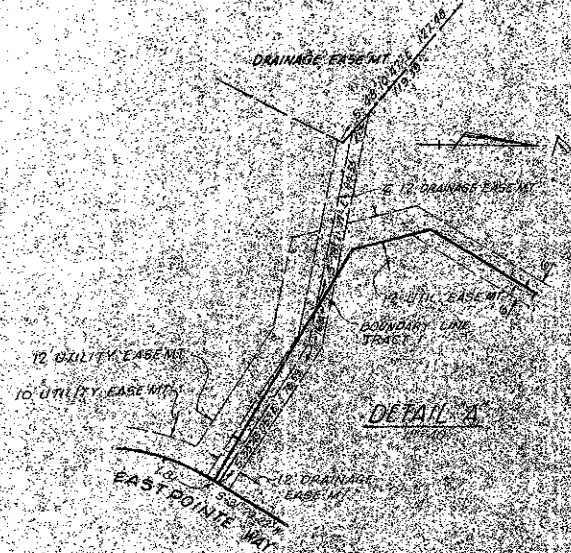
PLAT NO. 1
 (A PLANNED UNIT DEVELOPMENT)
EASTPOINTE COUNTRY CLUB

IN SECTION 27, TOWNSHIP 41 SOUTH, RANGE 42 EAST
 PALM BEACH COUNTY, FLORIDA

IN 3 SHEETS SHEET NO. 2
 APRIL 1976

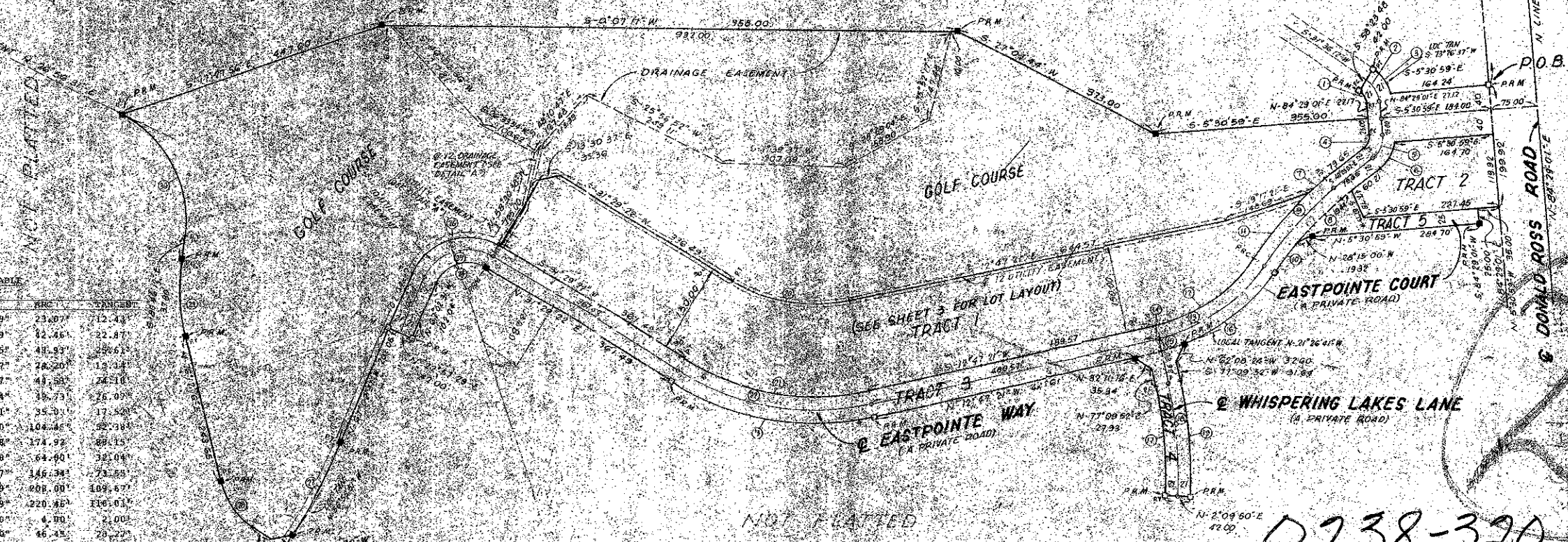


SCALE IN FEET
 1" = 100'



CURVE DATA TABLE

NO.	RADIUS	DELTA	ARC	TANGENT
1.	25.00'	52°-52'-49"	23.07'	12.43'
2.	46.00'	52°-52'-49"	42.46'	22.87'
3.	67.00'	41°-50'-25"	48.93'	28.61'
4.	25.00'	55°-27'-57"	20.20'	12.34'
5.	46.00'	55°-27'-57"	43.88'	24.51'
6.	67.00'	42°-31'-44"	56.79'	36.09'
7.	585.37'	3°-24'-21"	35.30'	17.508'
8.	547.22'	10°-56'-00"	104.46'	52.383'
9.	568.37'	17°-37'-58"	174.92'	89.15'
10.	547.37'	5°-41'-58"	64.90'	34.04'
11.	585.37'	3°-13'-37"	34.34'	17.368'
12.	265.46'	44°-53'-39"	208.00'	109.677'
13.	286.46'	44°-05'-39"	220.85'	116.013'
14.	286.46'	0°-48'-00"	4.00'	2.000'
15.	397.46'	8°-59'-20"	46.43'	23.227'
16.	307.46'	36°-14'-18"	184.46'	100.81'
17.	683.00'	14°-58'-58"	129.80'	66.492'
18.	704.00'	14°-59'-58"	184.30'	92.683'
19.	725.00'	14°-59'-58"	189.80'	94.44'
20.	265.00'	44°-16'-43"	204.79'	102.82'
21.	415.00'	44°-16'-43"	328.72'	168.25'
22.	435.00'	44°-16'-43"	336.94'	172.99'
23.	457.00'	44°-16'-43"	353.27'	183.93'
24.	58.00'	98°-31'-53"	99.74'	67.35'
25.	79.00'	98°-31'-53"	138.86'	91.73'
26.	100.00'	98°-31'-53"	171.97'	116.12'
27.	979.00'	10°-06'-40"	172.77'	86.61'
28.	129.00'	41°-57'-26"	94.47'	49.46'
29.	329.00'	22°-56'-32"	131.74'	66.72'
30.	196.00'	72°-17'-17"	217.29'	143.16'



*Establishment
 Country Club*

AREA TRACT 1 = 4.462 AC.
 AREA TRACT 2 = 0.577 AC.
 AREA TRACTS 3, 4 & 5 = 2.716 AC.
 GOLF COURSE AREA = 16.691 AC.
 TOTAL AREA = 24.446 AC.
 TOTAL DWELLING UNITS = 21
 DENSITY = 0.86 UNITS PER ACRE
 TOTAL OPEN AREA THIS PLAT = 20.28 AC.

0238-320

32/8

